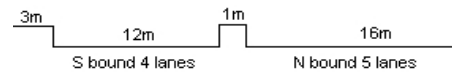


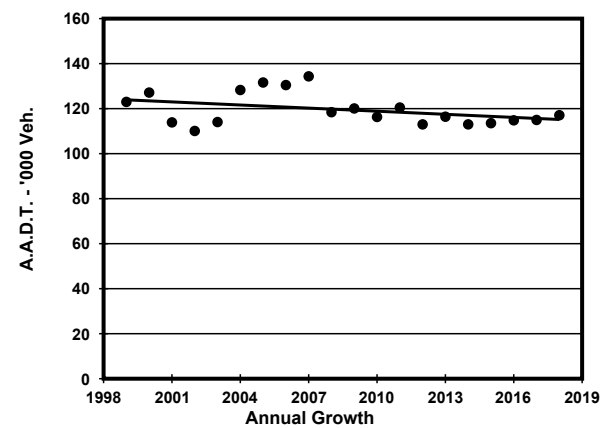
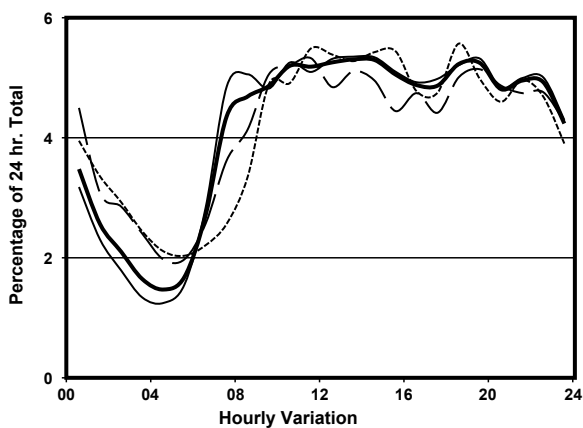
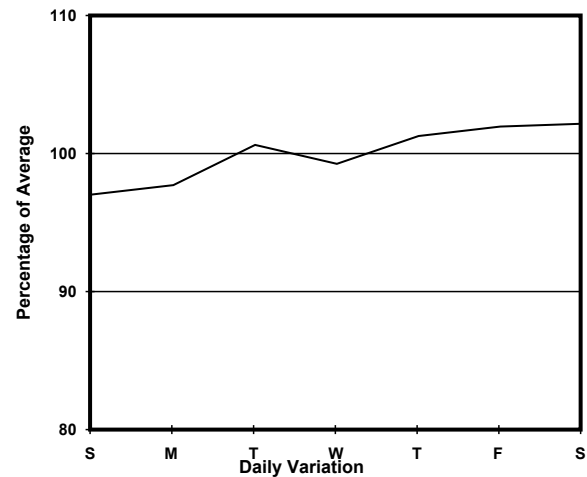
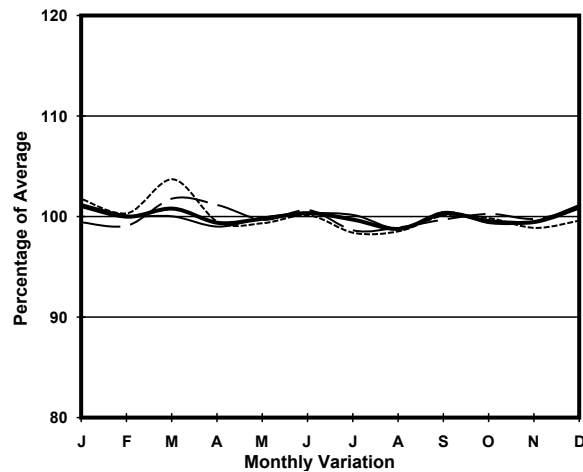
YEAR 2018

LINK CHATHAM RD N (from WUHU ST to HONG CHONG RD)

COVERAGE (B) STATION 4208
ROAD NETWORK MAJOR
ROAD TYPE PRIMARY DISTRIBUTOR



1. TRAFFIC FLOW VARIATION AND GROWTH



— All day - - - - - Mon.- Fri. Sat. - . - . - Sun.

2. TRAFFIC CHARACTERISTICS (BY DIRECTION)

Parameter	All - Day	Mon. - Fri.	Sat.	Sun.
SOUTH BOUND				
A.A.D.T.	46060	44980	47810	50220
R 12 / 24 - %	57.3	58.3	51.9	57.8
R 16 / 24 - %	76.7	78.1	71.4	75.8
AM Peak Hour	0900-1000	0700-0800	0900-1000	0900-1000
One-way flow at AM peak hour	2530	2610	2800	2980
T - % (AM)	-	17.7	-	-
PM Peak Hour	1800-1900	1800-1900	1800-1900	1800-1900
One-way flow at PM peak hour	1990	1880	1880	2660
T - % (PM)	-	10.6	-	-
Prop.of commercial vehicles - 16 hr.	-	10.4	-	-
NORTH BOUND				
A.A.D.T.	71020	72460	72010	63580
R 12 / 24 - %	62	63.1	60.2	57.8
R 16 / 24 - %	82.3	83.6	79.7	78
AM Peak Hour	0800-0900	0800-0900	0900-1000	0900-1000
One-way flow at AM peak hour	3200	3520	3270	2580
T - % (AM)	-	15.4	-	-
PM Peak Hour	1800-1900	1800-1900	1800-1900	1800-1900
One-way flow at PM peak hour	4130	4230	4120	3680
T - % (PM)	-	15.1	-	-
Prop.of commercial vehicles - 16 hr.	-	14.9	-	-

3. OTHER INFORMATION AND COMMENT

4. Vehicle classification and occupancy - Monday to Friday

Time		Class of vehicle									
		Motor Cycle	Private Car	Taxi	Private LB	PLB	Goods veh.		Non Fr. Bus	Fr. Bus	
							Light	M & H		SD	DD
0700-0800	Pro	8.7	33.8	21.2	2.0	2.9	15.1	4.4	4.8	0.0	7.0
	Ocp	1.1	1.3	2.0	7.5	11.3	1.5	1.1	13.8	0.0	45.3
0800-0900	Pro	3.9	49.4	16.2	2.0	2.5	13.7	3.8	2.5	0.1	6.0
	Ocp	1.1	1.3	2.1	3.2	11.2	1.4	1.4	14.6	1.0	52.2
0900-1000	Pro	4.2	38.0	22.4	0.6	1.5	19.1	5.3	3.0	0.1	6.0
	Ocp	1.0	1.2	1.9	2.5	9.8	1.5	1.3	9.1	1.0	30.7
1000-1100	Pro	4.3	31.5	22.4	1.0	1.6	25.4	6.7	1.4	0.0	5.7
	Ocp	1.1	1.4	2.0	2.9	6.7	1.5	1.4	9.6	0.0	28.1
1100-1200	Pro	3.9	33.7	21.9	0.6	1.0	26.0	4.6	2.9	0.0	5.2
	Ocp	1.1	1.3	1.8	2.4	10.5	1.5	1.3	16.6	0.0	30.0
1200-1300	Pro	3.3	36.0	24.7	1.1	1.4	22.7	3.5	2.3	0.0	5.0
	Ocp	1.0	1.4	2.0	5.8	10.0	1.5	1.3	19.7	0.0	28.9
1300-1400 Peak hour	Pro	3.7	30.7	24.8	2.4	1.2	24.6	4.7	3.3	0.0	4.5
	Ocp	1.1	1.4	2.2	2.3	6.8	1.4	1.3	12.6	0.0	34.2
1400-1500	Pro	4.6	34.8	22.0	1.2	0.8	24.5	4.7	3.0	0.0	4.3
	Ocp	1.0	1.4	2.0	1.6	8.2	1.5	1.2	8.4	0.0	31.4
1500-1600	Pro	4.6	32.0	24.1	1.6	1.6	22.6	5.2	2.8	0.0	5.3
	Ocp	1.0	1.3	2.0	6.5	10.0	1.4	1.2	9.6	0.0	31.7
1600-1700	Pro	4.2	37.4	20.7	2.1	1.3	21.2	3.5	3.9	0.0	5.8
	Ocp	1.1	1.4	1.9	2.9	11.2	1.5	1.4	10.2	0.0	35.9
1700-1800	Pro	8.1	39.1	19.4	1.2	2.0	17.8	2.1	5.0	0.0	5.4
	Ocp	1.1	1.5	2.3	2.3	12.3	1.5	1.3	14.4	0.0	46.4
1800-1900	Pro	9.5	44.1	21.2	0.5	1.3	11.4	0.7	4.7	0.0	6.5
	Ocp	1.1	1.4	2.2	4.0	13.9	1.5	1.2	23.0	0.0	59.7
1900-2000	Pro	5.9	47.6	24.9	0.3	2.1	9.1	0.9	3.9	0.1	5.5
	Ocp	1.1	1.5	2.2	1.8	13.7	1.4	1.1	11.3	1.0	44.6
2000-2100	Pro	4.4	43.6	31.2	0.1	2.4	7.2	2.4	3.7	0.0	5.2
	Ocp	1.1	1.4	2.0	1.0	10.6	1.4	1.5	12.0	0.0	35.2
2100-2200	Pro	4.2	42.2	34.4	0.1	2.9	8.0	1.2	2.2	0.0	4.8
	Ocp	1.1	1.6	2.1	1.0	9.3	1.4	1.4	2.2	0.0	34.1
2200-2300	Pro	4.4	43.7	34.7	0.2	3.3	6.2	0.9	1.4	0.0	5.3
	Ocp	1.1	1.4	2.0	1.7	10.4	1.5	1.5	3.5	0.0	36.5
16 hours	Pro	5.1	38.7	24.1	1.1	1.8	17.2	3.4	3.1	0.1	5.4
	Ocp	1.1	1.4	2.0	3.6	10.5	1.5	1.3	12.7	1.0	38.4

Legend

Pro. Proportion of vehicles in % (Sum may not add up to 100% due to figure rounding)*

Ocp. Average occupancy of vehicles including both driver and passengers*

M&H Medium and Heavy

***** All traffic data are collected from combined bounds except for one way traffic